

# GREAT BINFIELDS PRIMARY SCHOOL PROSPECTUS



*welcome*

TO OUR  
SCHOOL

Dear Parent/Carer,

Our school opened in 2001 with a standard number of 60 pupils in each year group (2 classes). Over a number of years we have expanded to two forms of entry (2 classes per year group) in all year groups from Reception to Year Six.

This brochure is designed to give parents/carers information about the school, its aims, ethos, policies, organisation and curriculum.

We have a strong team of staff who are committed to providing a high-quality learning environment where children can achieve, enjoy and excel in all areas of school life. At Great Binfields we are a family. Bullying, racism and any other form of negative behaviour is not tolerated. We also have a good sense of fun.

Teachers and support staff all work hard to maintain a safe and happy school where children are encouraged to become enthusiastic and lifelong learners. Children are valued as members of the school community and our Behaviour Policy places emphasis on celebrating success and taking responsibility for their actions. The school offers an enriched, broad and balanced curriculum and strives to give children lots of opportunities in music, arts and sport as well as excelling academically. This is reflected in our Mission Statement – ‘Learning Together, Achieving Forever’.

Parents are encouraged to be active partners in their children’s learning through effective communication, regular information about children’s learning and progress, home learning activities and a strong emphasis on developing children’s reading skills from an early age.

Parents also support the school by attending concerts and shows, and helping in school in a variety of ways. We have an effective parent/teacher group known as the ‘Friends of Great Binfields’ who organise events throughout the year so that parents/carers can be involved whilst raising money for special projects within the school.

Our school benefits from the good support of an active Governing Body who ensure that the school fulfils its duties and provides value for money. They challenge the school to ensure that children achieve high standards within the spirit of the agreed school aims.

I am proud to be part of a school that values children as individuals, recognising individual skills, interests and needs so that each child and adult can ‘Learn together’ and ‘Achieve Forever’.

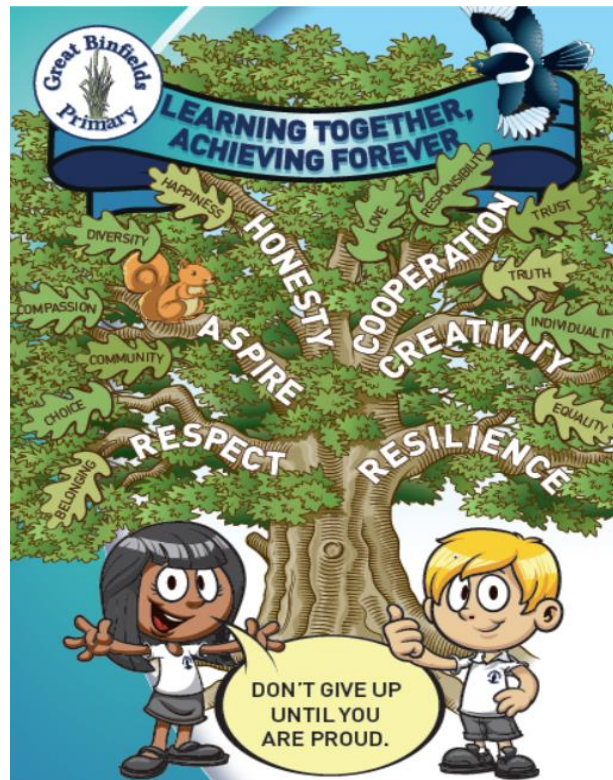


Miss Nicki Lyddon - Headteacher

# Our School Vision and Values

## ***'Learning Together, Achieving Forever'***

*Our school values:*



**As a partnership of Children, Parents, Staff, Governors and the wider Community, we aim to:-**

- Promote equality of opportunity for all pupils and staff
- Ensure that everyone will experience an inclusive education where discrimination on the grounds of race, sexual orientation, gender or disability is actively challenged, and tolerance and understanding promoted
- Meet children's individual and collective needs
- Provide a stimulating, secure and nurturing environment
- Promote an ethos that is highly motivating and encourages all to take responsibility for their own learning
- Provide an environment where we feel secure, valued, respected and understood
- Encourage all to have a positive self-image, high self-esteem and increasing confidence

- Provide an environment which encourages active learning, investigation, creativity and challenge
- Value and celebrate the richness and diversity of cultures and beliefs in our community
- Celebrate achievement, attainment and progress in all areas of development
- Display high standards of good manners and politeness at all times
- Encourage all to have a sense of responsibility for themselves, for each other and for their environment

# Our School

<b>Headteacher</b>	Miss N Lyddon
<b>Assistant Headteacher</b>	Mrs M Holdsworth
<b>Special Educational Needs- Disability Co-Ordinator (SENDco)</b>	Miss C Khan
<b>Business Manager</b>	Mrs C Gontard
<b>Site Manager</b>	Mr N Abley
<b>Chair of Governors</b>	Mr M Dooley
<b>Address</b>	Binfields Farm Lane Chineham Basingstoke RG24 8AJ
<b>Telephone</b>	01256 460532
<b>School email</b>	<a href="mailto:adminoffice@greatbinfields.hants.sch.uk">adminoffice@greatbinfields.hants.sch.uk</a>
<b>School website</b>	<a href="https://www.greatbinfields.co.uk/">https://www.greatbinfields.co.uk/</a>
<b>Extended Schools (Breakfast and After-School Club) contact</b>	SCL <a href="https://wearescl.bookinglive.com/home/term-time-locations/great-binfields-primary-school/">https://wearescl.bookinglive.com/home/term-time-locations/great-binfields-primary-school/</a>

# Our School Governing Body

The role of a Governor within a primary school is a serious yet extremely rewarding duty. They play an essential role in setting the strategic direction for the school and holding its leadership to account.

The Governing Body has responsibility for:

- delivery of the curriculum
- care and safety of the children and staff
- appointment of staff
- management of the budget
- maintenance of the building.

The full Governing Body meets at least three times a year, but a lot of work is undertaken in various committees: The full Governing Body meets twice a term. Each governor is also a member of one of the following committees:

- Finance & Buildings
- Curriculum
- Human Resource and Admissions

**You can find out more information about our Governing Body and the work that they do by looking on our school website. <https://www.greatbinfields.co.uk/meet-the-governors/>**

# Our School Organisation

## Early Years Foundation Stage

These are the Reception classes. They follow a curriculum called Early Years Foundation Stage (EYFS) which is play-based and involves a balance between 'child-initiated' (chosen by the child) and 'adult initiated' (led by an adult) activities. Each teacher in the Reception class is supported by a teaching assistant.

## Key Stage 1

This includes Years 1 & 2 which are the first classes to follow the National Curriculum. Key Stage 1 is sometimes referred to as 'Infants'.

## Key Stage 2

This is Years 3, 4, 5 and 6. Key Stage 2 is sometimes referred to as 'Juniors'.

# The School Day

## All classes:

8:45 am – Registration

10:30 am - Breaktime

12:00 noon – Lunchtime

1:00 pm – Afternoon session starts

3:15 pm – School ends



# Applying for a School Place

## Applying for a reception place for September 2026

Children start school in the September after their fourth birthday.

If your child was born between 1 September 2021 and 31 August 2022 they are due to start in reception class at a primary school in September 2024.

You can apply for a place from autumn the year before they are due to start reception. This year's application window runs from **1<sup>st</sup> November 2025** until **15<sup>th</sup> January 2026**. It's important to apply as soon as you can.

If your child attends a school nursery or has an older brother or sister at your chosen school, you must still apply. Children who go to a school nursery will not automatically get a reception place at the school.

Before you apply, you should research the local primary schools. This will help you decide which schools to put down as your preferences. You can choose up to three.

To find out more about a school, you could:

- Go to a school open day
- Visit school websites
- Ask other parents what they think of the school
- Look at the latest Ofsted reports and school performance tables

Remember that schools have cut-off distances which change every year based on demand. Be realistic when making your three choices and always read the school's admission arrangements.

## How to apply

You can apply here:

<https://www.hants.gov.uk/educationandlearning/admissions/applicationprocess/year>

The deadline for primary school place applications is 15 January



 GOV.UK





# Forest School

We are extremely fortunate to be situated on a beautiful woodland site which forms a huge part of our Outdoor Learning curriculum offer. Each class has the opportunity to take part in these sessions during an allocated half term within their academic year.

## **The six principles of Forest School**

1. Principle 1: Forest School is a long-term process of frequent and regular sessions in a woodland or natural environment, rather than a one-off visit. Planning, adaptation, observations and reviewing are integral elements of Forest School.
2. Principle 2: Forest School takes place in a woodland or natural wooded environment to support the development of a relationship between the learner and the natural world.
3. Principle 3: Forest School aims to promote the holistic development of all those involved, fostering resilient, confident, independent and creative learners
4. Principle 4: Forest School offers learners the opportunity to take supported risks appropriate to the environment and to themselves.
5. Principle 5: Forest School is run by qualified Forest School practitioners who continuously maintain and develop their professional practice.
6. Principle 6: Forest School uses a range of learner-centered processes to create a community for development and learning.

The sessions will take place in the woodland on Great Binfields Primary School site. Sessions will last between 1 – 2 hours depending on the age range of the group. The sessions will be led by at least 2 adults. 1 adult will be a Level 3 qualified Forest School Leader with an outdoor paediatric First Aid qualification. Forest School sessions will follow a routine that the children will soon become familiar with. This routine will follow this pattern: warm-up games, group discussion, choice of activities and then exploration of the woodland. A snack will follow and we will always finish with a 'get together' - a chance to reflect.

# History

At Great Binfields we aim to stimulate our children's interest about the past, and therefore develop an understanding of the present in terms of what has gone before.

Through the study of History at Great Binfields our children will learn:-

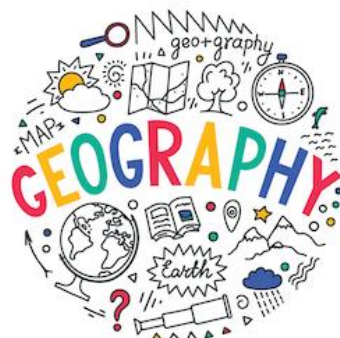
- A sense of chronology – the ability to place historical events on a timeline
- To develop a sense of identity and cultural understanding based on their historical heritage
- To value their own and other people's cultures
- To understand how events in the past have influenced their lives today
- To investigate past events and significant historical figures, developing skills of enquiry, analysis, interpretation and problem-solving.

# Geography

At Great Binfields we aim to stimulate our children's interest in their surroundings and places around the globe, as well as develop their geographical skills through first-hand experience and geographical enquiry.

Through the study of Geography at Great Binfields our children will learn:

- About children's lives and futures around the world
- To understand the United Kingdom's geographical position in the world
- To become engaged with the global community
- How our identity is shaped by the geography that is all around us
- About the changes we experience in our community and the wider world
- About the physical and human aspects of the world we live in
- To make sense of their surroundings and the wider world



# Art and Design

Art at Great Binfields will:

- Foster the child's creativity at an early stage through manipulation of different materials and tools, exploring in a playful and non-judgemental way. The children will then control and master these skills using familiar media (pencil, paint and collage) to design and create their own pieces of artwork. The children will be encouraged to challenge, deepen and be adventurous with their developing skills.
- Provide each child with a 'creative journey' sketchbook for them to record their thoughts, experimentation and designs. This will develop their critical thinking allowing the children to evaluate their skills.
- Provide the opportunity for the children to study the work of artists/designers from both Britain and around the world so the children can be exposed to different cultures, techniques and themes. Artists' work will always be used to ignite and influence the children's personal creativity. Each class in the school is named after an artist to enhance this.

When leaving Great Binfields all of the children will be able to use their creativity confidently in all areas of the curriculum and beyond.

# Design and Technology (DT)

Design and Technology (DT) at Great Binfields will:

- ❑ Develop the children's understanding of how technology has helped in the past, present and how it will change for us in the future.
- ❑ Provide opportunities for children to explore past and present designers/ influencers and how their inventions/products have revolutionised the everyday life we live in.
- ❑ Allow the children to pose questions and solve problems both on an individual and group basis.
- ❑ Provide the children with the opportunity to design a product from different materials (be it wood, textiles or food), make a product and then evaluate the effectiveness. In all cases the children will be shown how to use the specific tools correctly and safely.

When leaving Great Binfields all of the children will be able to use the collaborative and problem-solving skills developed in DT to help them in everyday life.



## Cooking Enrichment

We provide further enrichment to our life skills curriculum with our cooking provision. We offer all year groups the opportunity to create culinary delights, such as: fruit salad, shortbread and chickpea curry. The children love being chefs for the day while chopping, stirring, cutting the ingredients (and especially having a taste at the end!). We have a well-equipped Kids' Kitchen which is at the heart of all of these activities.

# Foreign Languages - French

Our aim in Languages is to provide the children with the language skills that our multicultural world demands. We want all children to be able to speak and write with confidence and fluency. We will achieve this by providing plenty of speaking and listening opportunities during French lessons and through opportunities to respond to spoken and written language from a variety of authentic sources. Children in the younger year groups experience different languages through songs, games and rhymes.

We want all pupils at Great Binfields to discover a love and enjoyment of languages.

## Music

Our aim is to make sure that every child at Great Binfields has a variety of musical experiences and leaves our school with an enthusiasm and love of music and the arts.

We encourage creativity within Music lessons. Children have opportunities to compose their own music, collaboratively or independently, using instruments and their voices. We believe that music should help children to develop the skills to work together harmoniously.

As part of the Music provision at Great Binfields, children attend a weekly whole school singing assembly. In addition, children in Year Three benefit from Hampshire Music Services who provide an expert Music teacher in the form of weekly 'Listen to me' Music sessions. We also encourage pupils to take peripatetic Music lessons and have high uptake of these. We have a school orchestra and a school choir and they regularly take part in a range of events both inside and outside of school. We also select children to take part in 'Rock to the beat' sessions each year.

We would like children to grow into confident performers. At Great Binfields, pupils are provided with regular opportunities to share their skills in concerts, productions and other performances throughout each school year.



## Physical Education (PE)

At Great Binfields we believe that PE and Sport play an important role in providing our pupils with a lifelong, positive and healthy relationship with sport and fitness and the potential to change children's lives for the better. All children receive two hours of PE lessons a week, half of which are run by our experts at 'Active 360'.

All pupils also have the opportunity to;

- attend extra-curricular clubs, including football, netball and athletics.
- participate in numerous competitions, either in school or by representing the school in the county.
- Become 'Sports Leaders' within P.E. lessons, run clubs and competitions and have a role in decision making.
- learn to swim and to be water safe.

We receive Sports Premium funding and utilise this in many ways, including the provision of specialist coaching in gymnastics, cricket and a range of other sports.

## Computing

As Computing is an increasing part of life today it is essential that all pupils gain the confidence and ability that they need in this subject to prepare them for the challenge of a rapidly developing and challenging technological world. Computing at Great Binfields will enhance and extend children's learning across the whole curriculum whilst developing motivation and social skills.

Our aim is to ensure that all pupils:

- can design, write and debug programs that accomplish specific goals
- use logical reasoning to explain how algorithms work and to detect and correct errors in algorithms and programs
- use technology safely, respectfully and responsibly. We ensure that children are aware of the possible risks when using the internet by making e-safety a regular part of Computing lessons and through whole school assemblies and visits from outside agencies
- can select, use and combine a variety of software on a range of digital devices to design and create a range of programs, systems and content.
- Understand computer networks, including the internet, and the opportunities they offer for communication and collaboration.

The learning environment should contribute to the development of these skills and we will always endeavour to provide access to suitable, up to date equipment and emerging technologies. We are incredibly fortunate in that each Key Stage has their own class set of both laptops and i-pads. Pupils receive a diet of both plugged (online/use of technology) and unplugged (offline, no

technology required) Computing sessions each week and have a designated weekly Computing slot. The use of technology is also promoted across the wider curriculum, as well as through Seesaw, our online Home Learning platform. Each classroom is equipped with an interactive whiteboard and two class i-pads. All pupils receive e-safety lessons as part of their Computing curriculum. They also attend regular e-safety assemblies and partake in 'Safer Internet Day' each year. Comprehensive online safety training is provided regularly to pupils, parents/carers, staff and governors.



## Religious Education (RE)

Religious Education (RE) in schools celebrates the diversity of religious and human experience. It encourages pupils to grow with the knowledge, skills, sensitivity and understanding needed to develop as confident and productive members of their local multi-faith community and the world. Our Religious Education curriculum encourages children to reflect on their own experiences and voice their views, whilst showing respect for the worldviews of the diverse mix of cultures, faiths and non-religious groups they encounter.

We do not encourage belief in any specific religious or non-religious philosophy and aim to develop children's awareness and understanding of many of the core spiritual, moral, social and cultural values which religions and non-religious people follow including the importance of treating others as we would wish to be treated ourselves.



## Personal, Social, Health and Economic (PSHE) Education

At Great Binfields, we use the Jigsaw programme to support the teaching and learning of PSHE. This area of the curriculum deals with health education, including diet, exercise, rest, life-style, self-image, relationships, keeping safe, dealing with bullying and personal, social and emotional development. This also incorporates relationships & sex education (RSE) as part of the national curriculum, which is taught age appropriately throughout the school.

Through PSHE, children also learn about citizenship and their place in society, their growing responsibility as citizens and as members of the global community, and their developing understanding of systems such as democracy. The children also learn about money and how to use it effectively. Economic wellbeing is discussed and future careers for the children. An activity called 'Circle Time' is often used to explore moral and emotional issues. School assemblies reinforce the teaching of many of the themes covered in PSHE.

The school has a School Council through which the children learn about citizenship issues. Many aspects of PSHE are taught in an integrated way through other subjects, and through daily school routines, while some units are planned for separately.



# Collective Worship and Assemblies

Collective worship aims to promote those values which we believe a caring parent would wish to adopt, as well as giving opportunities to instill the core ethos of the school. These include our school values of:

- Co-operation
- Respect
- Aspiration
- Creativity
- Honesty
- Resilience

We adopt a 'Growth Mindset' approach to our personal lives and are always proud of both our own achievements and those of others around us.

Collective worship encourages respect for religious and moral values, and tolerance of other religions, races and cultures. It promotes the schools' policies regarding spiritual, moral, social and cultural development and seeks to celebrate British values.

We take account of the family backgrounds of pupils and at times assemblies will be held which embrace relevant themes shared by Christians and non-Christians alike. An assembly is a valuable occasion when all can gather together to reflect, celebrate and respond to what they have heard, either through interaction with a text, piece of music or during a time of silence. We believe that Assembly is a vital part of the school day for all children. It serves several important purposes:-

- it enhances the spiritual development of the children
- it is a time of quietness, stillness and reflection
- it is an opportunity to come together as a community, either in part or as a whole, as appropriate
- it provides an opportunity to reinforce the values, ethos and expectations of the school, particularly tolerance, understanding, empathy and respect
- it is a time to share and celebrate effort and achievement of individuals, groups and teams
- it is a time to share and celebrate festivals and special events
- it is an opportunity, using music, stories, drama and other activities, to reflect the various faiths and traditions of our society, particularly the Christian tradition
- it fulfils the requirement of the law that all children take part in an act of Collective Worship.



## Visits and Performances

While parents/carers have the legal right to withdraw their child from acts of Collective Worship we do ask parents/carers to first consider that in doing so a child may feel "left out" and less a part of the school community. Parents/carers who wish to withdraw their child should make an appointment to see the Headteacher. We will always respect the views of the parents/carers and child, and work to find an agreeable outcome.

Your child's class will go on educational outings during the school year to places of interest linked to the curriculum. The trips might be to museums, castles and parks. These trips are of immense educational value and children build on the experience when they return to school. The children are also given many opportunities throughout the year to perform, for example in their class nativities or in their annual Musical (Y5/6 Summer term).



## Extra- Curricular Activities

Parents/carers will be informed by letter if there is an opportunity for their child to join a club. Some of our amazing clubs, teams and activities include netball, tag rugby, football, dance, drama and orchestra. We also have coaches and instructors who run clubs afterschool. These change on a half termly basis.

## Breakfast and After-School Club

We operate a breakfast and after school club on site. Breakfast club starts at 7.45am each morning and after school club operates from the end of the school day until 6.00pm. Please book directly on the SCL website: <https://wearescl.bookinglive.com/home/term-time-locations/great-binfields-primary-school/>

## Home Learning

At Great Binfields Primary School in Reception, children will be expected to learn key words and eventually spellings and read books that are closely matched to their phonics level and also read for pleasure.

In Key Stage 1, homework will include learning spellings, sentence work and reading books that are closely matched to their phonics/comprehension level. They will reinforce their Maths learning through the use of Numbots (online maths app/website) and MathsSeeds. The children also have the opportunity to take books home to read for pleasure.

In Key Stage 2, homework will be based on a range of curriculum areas and will, where possible, involve an element of choice. The children will bring home a 'banded book' which will be matched closely to their academic level. They will also have the opportunity to take books home to read for pleasure, following on from their weekly Library session. They will reinforce their Maths learning through the use of TTRockstars (online maths app/website) and Mathletics. The children also have the opportunity to take books home to read for pleasure.

All homework for pupils Year 1 – 6 is set via Seesaw (our online Home Learning platform). We hope that parents/carers will encourage their child/ren to complete the tasks and help and support when appropriate. Class teachers are always willing to discuss ways in which parents/carers might help their children.



## Parents/Carers in Partnership

We are firmly committed to building a partnership between home and school with the aim of developing shared expectations, of enhancing the quality of education, and of achieving high standards. We would like the partnership to take a variety of forms including:

- the sharing of books and undertaking other appropriate activities to support your child at home
- attending Parent Consultation evenings
- attending meetings and workshops

- joining the Friends of Great Binfields to support the school with fundraising and arranging fun events for children and their families

Parent/carer consultations take place at least twice a year although parents are welcome to see the class teacher at any other mutually convenient time. Parents/carers receive a written report at the end of the school year. An open evening is held during the summer term for parents/carers who would like to see their children's work/meet their new class teacher/wish to discuss the contents of their child's report.

## Assessment

Assessment is a vital part of the teachers' tasks in the classroom. They must continually assess each child's progress and achievement in order to plan the next stages in the development of the child's learning according to his/her needs.

The teacher will be assessing each child in a variety of ways:-

- observations of how the child is learning and undertaking tasks
- discussion with the child
- consideration of the child's work
- specific set tests and tasks used across the Year Group
- End of Key Stage Standard Assessment Tests (Year 2 and Year 6)
- Reading age and spelling age papers each term (Years 1 - 6)
- A Maths assessment paper each term (Years 1 - 6)
- A Phonics Screening Check at the end of Year 1
- A Multiplication Check at the end of Year 4
- Optional Tasks and Tests (Years 3, 4, 5)
- Progress against targets in Literacy and Maths

We track children's progress from Baseline Assessment in their first 6 weeks in Reception through to the end of Key Stage 2 SATs. The children are encouraged to assess themselves and offer their own comments and observations on their learning, progress and achievement.

Parents/carers will receive an annual report of their child's progress. Progress, effort and achievement are celebrated with each child, within the classroom and within the whole school community.



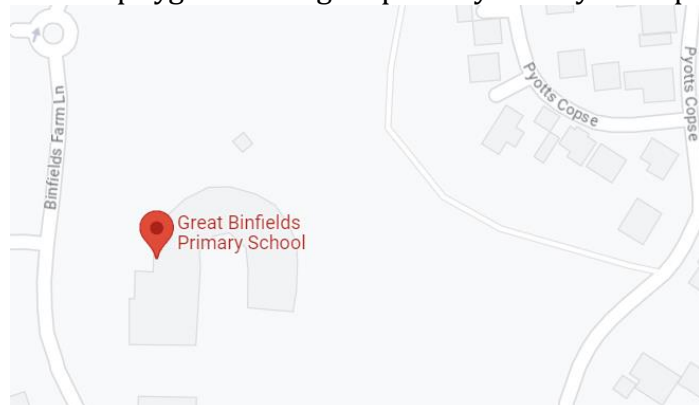
## A Guide on Special Educational Needs (SEND)

### What do you do if you think your child is experiencing problems learning at school?

- **Talk to your child's teacher.**  
Many problems can be sorted out as they arise. It is important that you speak to your child's class teacher or the SENDCo as soon as you think there is a problem. They will work with you and decide how best to assist your child.
- **Read the School's Policy on Special Educational Needs & Disability and the SEN report.**  
The School's policy on Special Educational Needs & Disability is regularly reviewed by staff and governors. For reference, a full copy is available at the School Office and on the website.
- **What happens next?**  
The class teacher will work with the SENDCo and parents/carers to ascertain as to whether any interventions need to be implemented.
- **Are further steps necessary?**  
In most cases your child will benefit from the extra help they have received. In some cases more support will be needed and your child may benefit from working with a specialist member of staff. In a small number of cases we may, with parent/carer permission, refer to an outside agency or a formal assessment may be advised. At all times you will be kept up to date with what is happening concerning your child's education and you will be advised as to the best course of action. At Great Binfields the Special Education Needs & Disability Co-Ordinator (SENDCo) is Cheryl Khan.

## Access to the School

There are 2 different entrances to the school: Little Copse entrance ('top' of school) and at the 'bottom' playground along the pathway from Pyotts Copse.



The staff car park **should not** be used by parents for cars or for walking through. The carpark is constantly used by staff and should not be used by parents/carers or children as it is dangerous.

## Our School Uniform

Children are proud to wear the Great Binfields uniform and it has many benefits such as giving a sense of belonging and making it easier for staff to identify children when on school trips. As all children are expected to wear the uniform it can make a child feel uncomfortable if they are not dressed in the same way as other children at the school. Your co-operation is very much appreciated. The uniform is as follows:

- Blue Binfields logo school jumper or cardigan
- Grey tailored trousers, skirt, pinafore or shorts
- White polo shirt
- Grey, white or black socks or tights
- Blue Gingham dress for Summer
- Black school shoes (not trainers)
- A school branded book bag ( EYFS, Year 1, Year 2) or a small rucksack (Year 3,4,5,6 ONLY)
- Black jogging bottoms or leggings and a black non branded zipped hoodie
- Black Shorts (must be worn for indoor PE)
- Coloured T shirt (your child's house colour) available from Friends Group or supermarkets
- PE trainers

**Please ensure that your child's clothing has his/her name in ALL items.** If a child comes to school inappropriately dressed for school we may contact you to discuss the matter.

**Our PE kit:** This consists of black shorts, coloured team round neck T-shirt, a plain black tracksuit or jogging bottoms for the colder months and spare socks (if girls wear tights). Children should be barefoot for gymnastics and dance but require footwear for outside PE. KS1 children should have Velcro trainers and KS2 children should have trainers (laces only if your child is able to do these independently please). Children come to school in their PE kit on their class' PE days.

**Jewellery:** Children may only wear stud earrings if they have pierced ears. Children may also wear a watch (not a Smart watch or fitbit though please). Wearing jewellery of any kind can be dangerous for your child because the jewellery may get caught or accidentally pulled which can cause a painful and unpleasant accident. Children are also not allowed to wear any makeup or nail varnish.



# School Meals

**Packed Lunch:** Children may bring a packed lunch in a lunch box/bag. This needs to be clearly labelled with the child's name and class. As we are a Healthy School we encourage fruit and other healthy snacks as part of a well-balanced meal. Nuts are not allowed. This includes using peanut butter and Nutella in sandwiches.

**School Dinners:** The school has a kitchen on site which caters for the children. Or school meals are very well balanced and nutritious. You can view Pabulum's website here: <https://www.pabulum-catering.co.uk/> and the school menu here: <https://www.greatbinfields.co.uk/lunch-at-great-binfields-we-are-a-nut-and-pea-free/>

Please note, we are a nut and pea free school due to allergies.

Children in EYFS and Key Stage 1 have universal free school meals. Universal infant free school meals (UIFSM) provides funding for all government funded schools to offer free school meals to pupils in reception, year 1, and year 2. The school operates a cashless system which means that all dinner money must be paid through Scopay, an online payment scheme.

If you feel you are entitled to free School meals, please enquire at the School Office for further information. You can also log on to the Hampshire County Council Website <https://www.hants.gov.uk/educationandlearning/freeschoolmeals/juniorsecondary>

The school attracts extra funding for books and resources for each child that takes up a free meal so it is important that families eligible for free meals take up this entitlement.

All children can have a free piece of fruit/vegetable(s) at break time. Children can bring a piece of fruit or a vegetable to eat at break time. We do not allow sweets of any kind in school (this includes chewing gum). Water is available throughout the school day from the drinking fountains and in classrooms. Children are also encouraged to bring in named water bottles from home. We also sell GBPS water bottles; but these are not mandatory.



## Safeguarding

At Great Binfields, we provide a safe, caring, positive and stimulating environment that promotes the learning and care of all, alongside the social, physical, emotional and moral development of the individual child. Safeguarding is the responsibility of all and therefore all staff know the policies and procedures related to safeguarding.

Our prime concern is always the well-being of our pupils and if we act it is to protect the individual. Every school is required to have a Designated Lead for Safeguarding (DSL) and at Great Binfields the DSL is Miss Lyddon, Headteacher. There are three Deputy Designated Leads for Safeguarding (DDSLs) – Miss Khan (SENCO), Mrs Holdsworth (DHT) and Mrs Hawkins (FLW).

We wish to work with parents and carers to ensure the best possible care for children, but this may occasionally require situations where we have a cause for concern to be referred to Social Care. In these cases, parents/carers will always be informed unless it has been considered that the child may be put at further risk. All policies related to safeguarding, including Online Safety are available online through our website or from the School Office.



Hampshire  
Safeguarding  
Children  
Partnership

## Relational Inclusion (Behaviour)

All members of the school community are expected to behave towards each other with respect and consideration, politeness and good manners. Children are encouraged to take responsibility for their own actions. The ethos of the school can be summed up as, "Treat other people how you wish to be treated". The children are constantly reminded of our expectations in all areas of school life - in the classroom, around the school, in the playground and in assembly. Underpinning all of these is both our Behaviour Code and our school values.

Our emphasis is placed firmly on encouragement and praise for effort, achievement and good behaviour, with a reward system shared by the whole school. Respectful behaviour is a strength at Great Binfields Primary School.

Bullying is not tolerated at Great Binfields. There are very few incidents of bullying here and



quickly when starting school but helps them to keep and maintain friendships and enjoy the school environment. It is vital that your child is at school on time every day. It is equally important for all children to attend school every day in order to progress and reach their potential.

Please call our dedicated absence line and leave a message before 9.00 am. If we do not receive a reason for absence, it is counted as unauthorised. We are required to account for every child's absence and late arrival so your co-operation is essential. Any child who is late for school must be signed in at the school office before proceeding to class.

If your child has a medical appointment during the school day, please inform the school in advance. Please provide an appointment card, hospital letter or other proof of the appointment. Your child may return to school following the appointment. Where possible please make appointments outside the school day. If your child is unwell or has an accident during the school day, we shall phone and ask you to collect them. **It is essential that we have at least two emergency contact phone numbers and that these remain up-to-date throughout the academic year.**

Penalty Notices can be issued for unauthorised absence. In Hampshire, Penalty Notices are issued when a pupil has had 10 or more half-day sessions (equivalent to five school days) of unauthorised absence, in the last 10 school week period. These days absence do not have to be taken together. If 10 sessions are unauthorised over 10 weeks a fine will be issued. More information can be found on our website.

Categories	Learning days lost
Acceptable sickness & unforeseen absences.	98% = 4 days
	97% = 6 days
	96% = 8 days
<b>Attendance below 95%</b> is of concern to the school & a meeting will be arranged with school and parents/carers. 10 days <b>unauthorised</b> absences for holidays over the year mean you will only achieve 95% attendance. Sickness & medical appointments, although usually unavoidable & authorised, will add further to your child's absence record.	95% = 10 days
	94% = 12 days
	93% = 14 days
	92% = 16 days
<b>Poor attendance.</b> Attendance below 90% is a serious concern. Your child has now missed nearly 4 weeks' education. You may be referred to the Early Help team at the local authority.	91% = 18 days
	90% = 20 days
	89% = 21 days
	88% = 23 days
	87% = 25 days
	86% = 27 days
<b>Very poor attendance</b>	85% = 29 days
	84% = 31 days
	82% = 35 days
	80% = 39 days

## Medical

Should your child need to have medicines or inhalers administered during the school day, please call at the office, complete our pink medical form and leave the medicine with the office staff. Please collect the medicine yourself at the end of the day and do not ask your child to do so. We will NOT administer any medication which has not been prescribed by your child's GP. If your child is asthmatic and is likely to require any form of medication in school, please ensure that you complete the Medical Information section on our Admission and Contact form so that we have as much information as possible on file. You will also be required to complete our asthma form. If your child has any form of medical condition that could affect them in school, or that could require a particular form of treatment or care, please let us know. Information will be treated as confidential. If there are still unanswered questions, please contact the school office who are always happy to help parents with their queries. The office is open every school day from 8.30 am to 4.30 pm.

